

# Connecting the BOSS TONE STUDIO iOS App to the KATANA-AIR Unit

---

© 2018 Roland Corporation

02

For details on how to use BOSS TONE STUDIO, refer to the “Using BOSS TONE STUDIO for KATANA-AIR” PDF.

- \* You can use BOSS TONE STUDIO for KATANA-AIR on both the KATANA-AIR and KATANA-AIR EX (hereafter listed as “KATANA-AIR”).

- 1. Power-on the KATANA-AIR unit and the mobile device.**
- 2. In your mobile device's settings, turn Bluetooth on.**

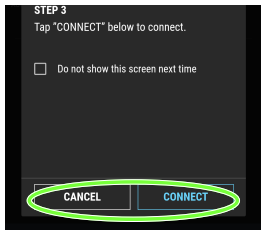


## **NOTE**

Do not tap "KATANA-AIR MIDI" if it is shown in the Bluetooth settings of the mobile device. If you tapped this, temporarily cancel the device registration, and perform the procedure again from step 2.

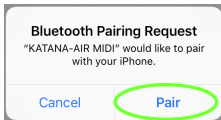
- 3. Start the "BOSS TONE STUDIO for KATANA-AIR" app that you installed in your mobile device.**

#### 4. Tap the [CONNECT] button shown on the screen.



- \* If you changed the Bluetooth ID (p. 8), the changed number is shown following "KATANA-AIR MIDI".
- \* If more than one KATANA-AIR is detected as a connection point, a selection screen appears.
- \* If the mobile device was already connected, that device is automatically reconnected, even if more than one KATANA-AIR corresponding to a connection point is detected.
- \* If "KATANA-AIR MIDI" is not shown, tap "SCAN" at the bottom of the DEVICES screen and search again.

**5. If “Bluetooth Pairing Request” appears, tap “Pair”.**



The editor screen is shown once the connection is made.

## If you can't connect

Check each of the following five items one at a time.

- 1 In the KATANA-AIR settings, is the Bluetooth function turned on?**

Verify that the KATANA-AIR unit's Bluetooth indicator is blinking or lit.

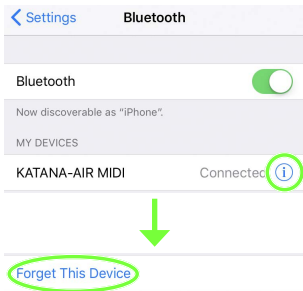
If it is unlit, press the [Bluetooth] button to make it blink or light.

- 2 In step 2 of the procedure (p. 2), could you have tapped a model name shown on the mobile device?**

When you turn the Bluetooth switch on in step 2, "KATANA-AIR MIDI" might appear in the list of "DEVICES" but you should not tap it. If you tapped it, clear the pairing, and try the procedure again from step 1.

# Clearing the pairing

1. Tap the "i" located beside "Connected", and then "Forget This Device".



2. Turn the Bluetooth switch off.



- 3 Turn Bluetooth on and off once again

Turn Bluetooth on/off again.

#### **4** Close all apps, and try the procedure again from step 1 (p. 2)

If you've checked **1**–**3** and still cannot connect to the app, close all apps that are running on your mobile device.

If paired, remove the pairing.

### Closing the app

Double-click the home button, and swipe up on the app screen.

- \* If you're using the iPhone X, the procedure for closing an app is different. Close the app as appropriate for the iPhone X.

#### **5** Power-off the mobile device and the KATANA-AIR unit, and then power them on again

If you've checked 1–4 and still cannot connect to the app, power-off the mobile device and the KATANA-AIR, wait for about 10 seconds, and power them on again.

If paired, remove the pairing.

If you've checked items **1**–**4** and still cannot connect to the app, contact Roland support.

## Changing the Bluetooth ID

Here's how you can specify "1" as the Bluetooth ID.

- 1. Put the KATANA-AIR unit in standby mode or turn off its power.**
- 2. While holding down the [CH A] button, press the KATANA-AIR unit's [⏻] button to turn the power on.**
- 3. After the power is on for three seconds, release the [CH A] button.**

### MEMO

If you want to specify "2" as the Bluetooth ID, hold down the [CH B] button and press the KATANA-AIR unit's [⏻] button.

- 4. Long-press the KATANA-AIR unit's [⏻] button to put the unit in standby mode.**
- 5. Press the KATANA-AIR unit's [⏻] button to turn the power on.**

If the setting was made correctly, the Bluetooth MIDI DEVICE screen of BOSS TONE STUDIO indicates "KATANA-AIR MIDI\_1".

If, after specifying the number "1" or "2", you want to return to a state in which nothing is specified, execute a factory reset (Owner's Manual "Restoring the Factory Settings").