

Click “Settings” – Hardware Settings – Display 1, input password “**showtec**”,



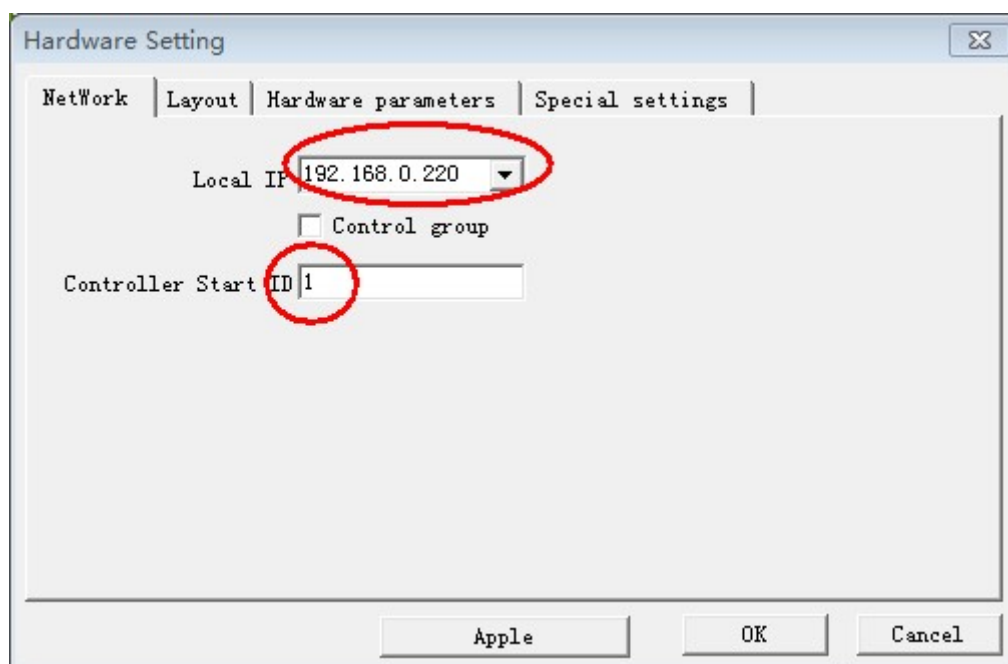
In “NetWork”, set up Local IP for the PC controller.

Local IP: refers to the IP address of the computer.

Fixed IP address should be set for the computer, which should not be automated acquired. IP address section should be 192.168.0.n or 192.168.1.n (n could be any number between 1 and 255)

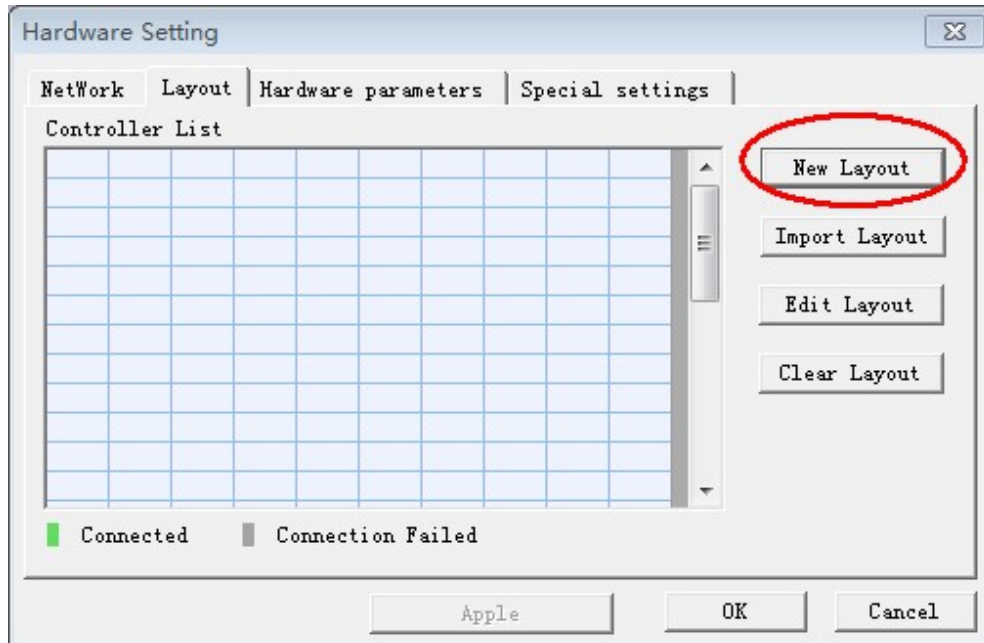
Controller Start ID: refers to the number of first controller, which is normally 1.

Control group is not chosen and the mode is broadcasting mode: normally for the synchronization of controller with less than 100,000 points, this mode will be applied.

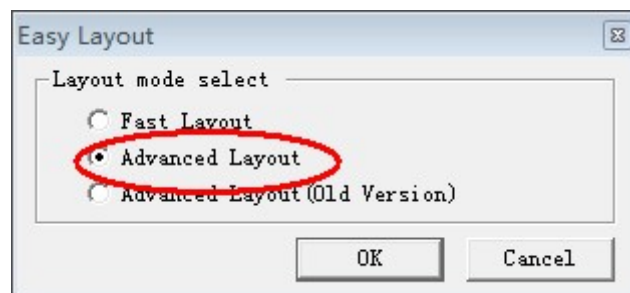


In Layout, users need to set up New Layout:

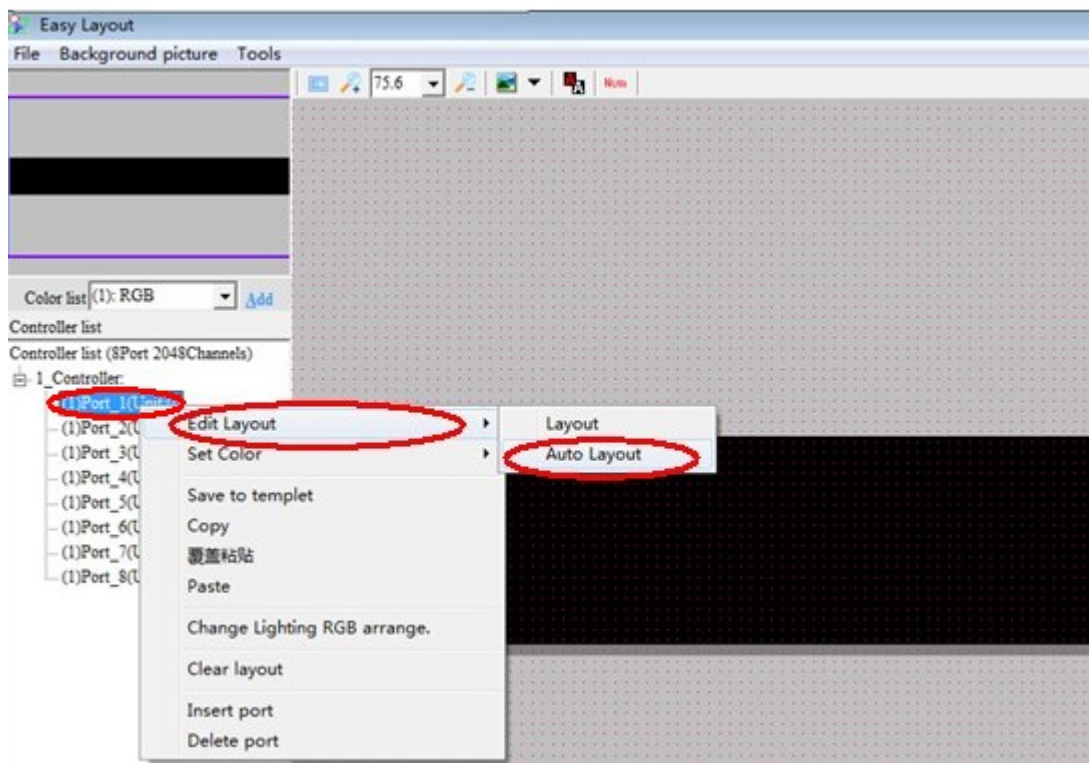
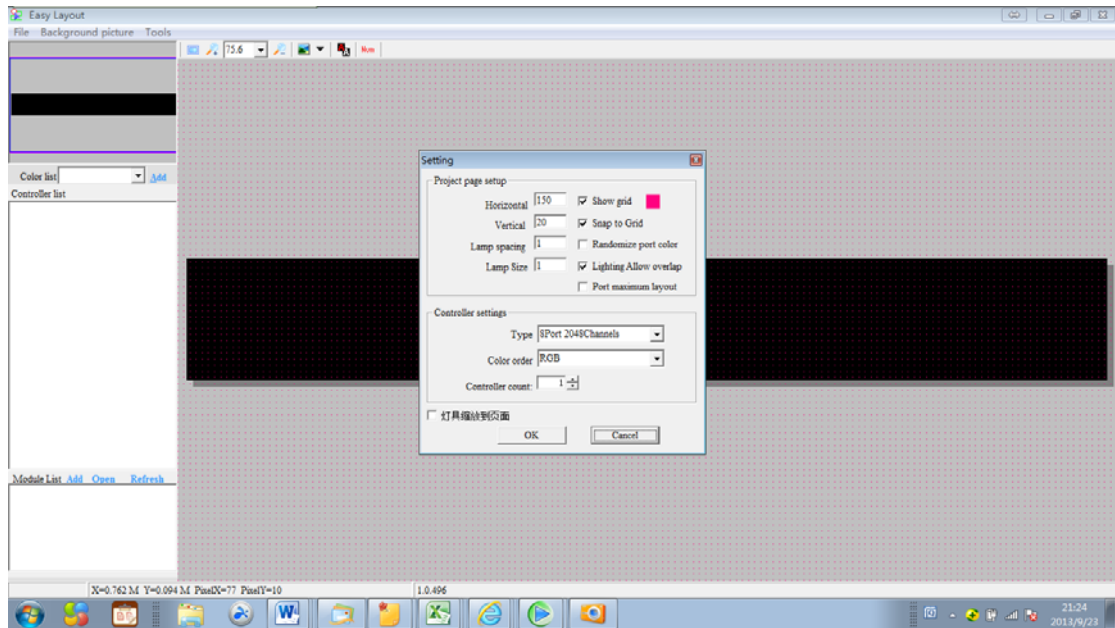
To create a new layout file and perform editing in layout design system. Please refer to **Layout Design System** in Easy Player manual for details.

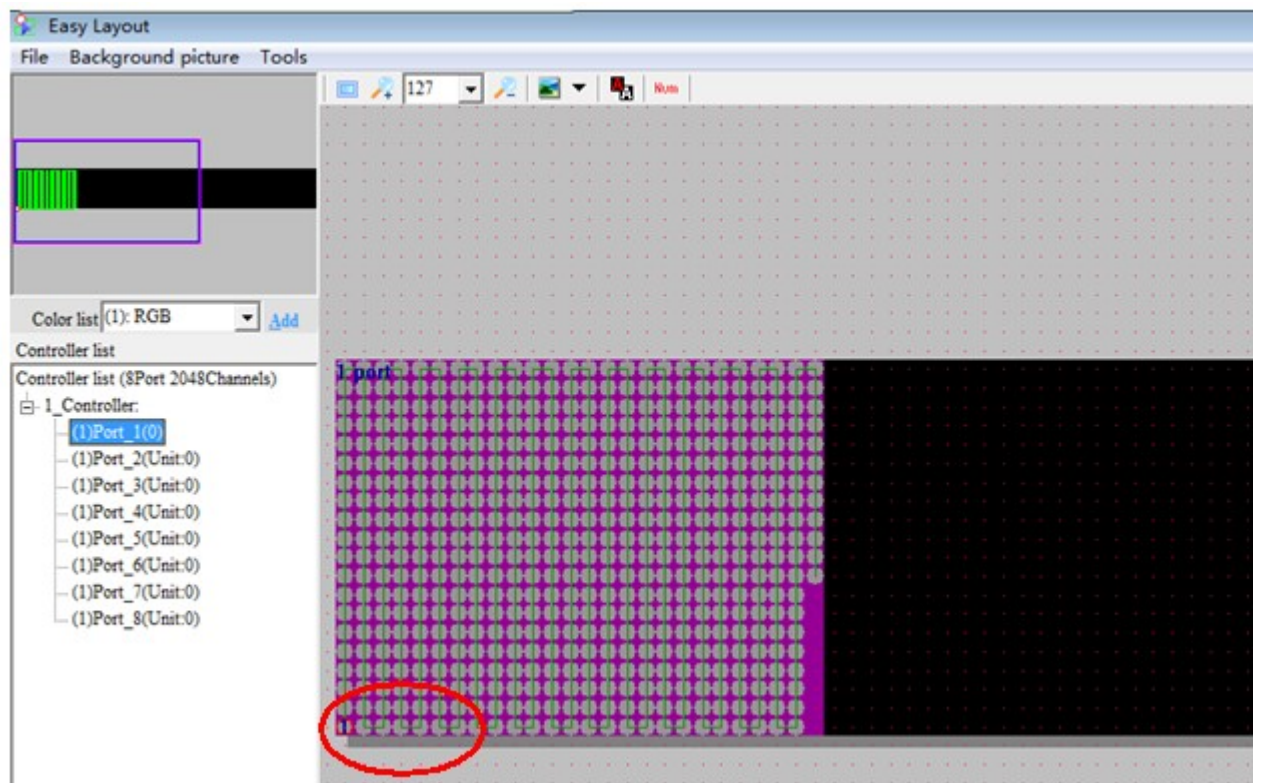
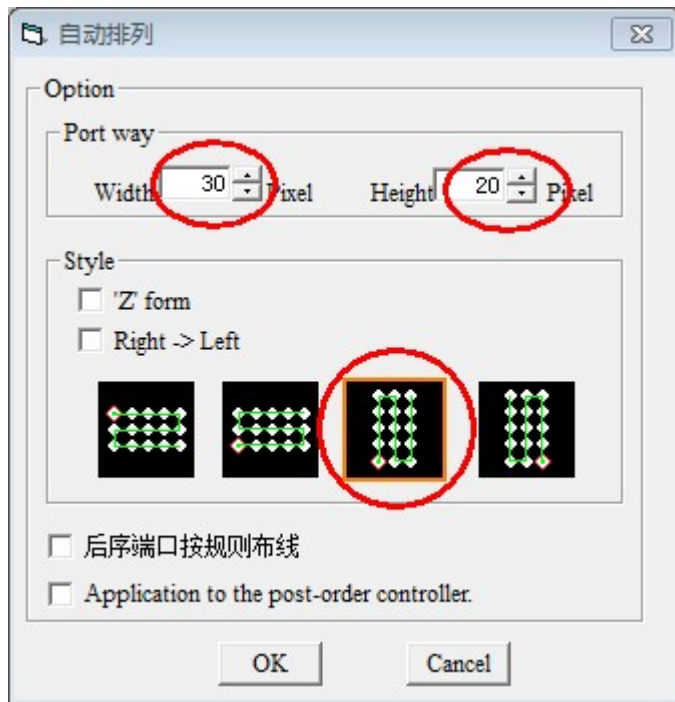


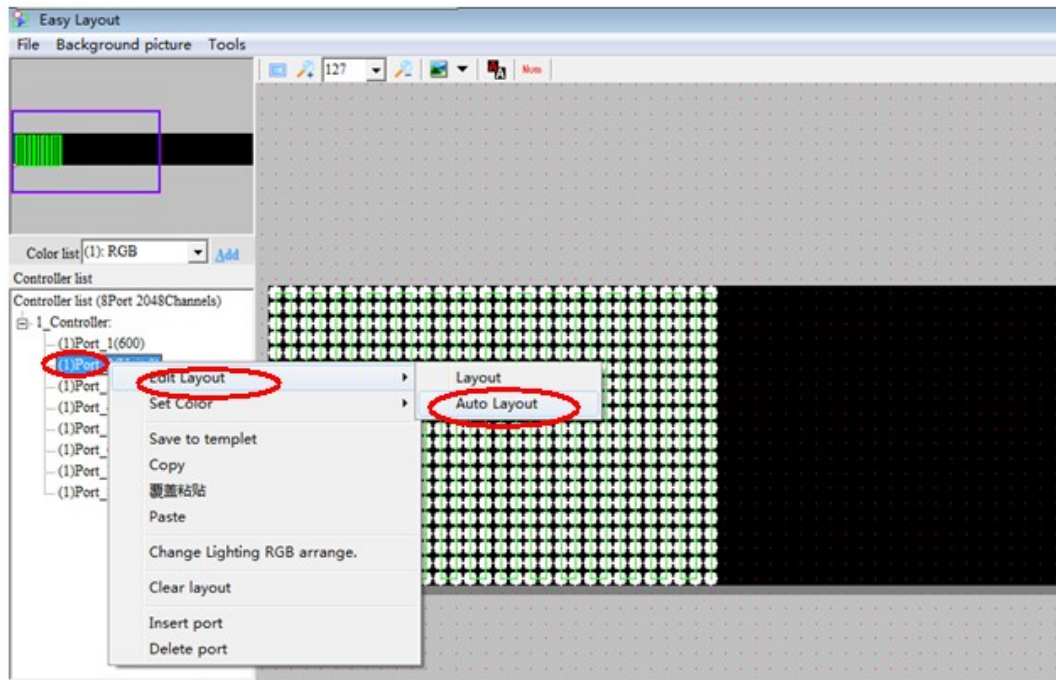
Select "Advance layout"



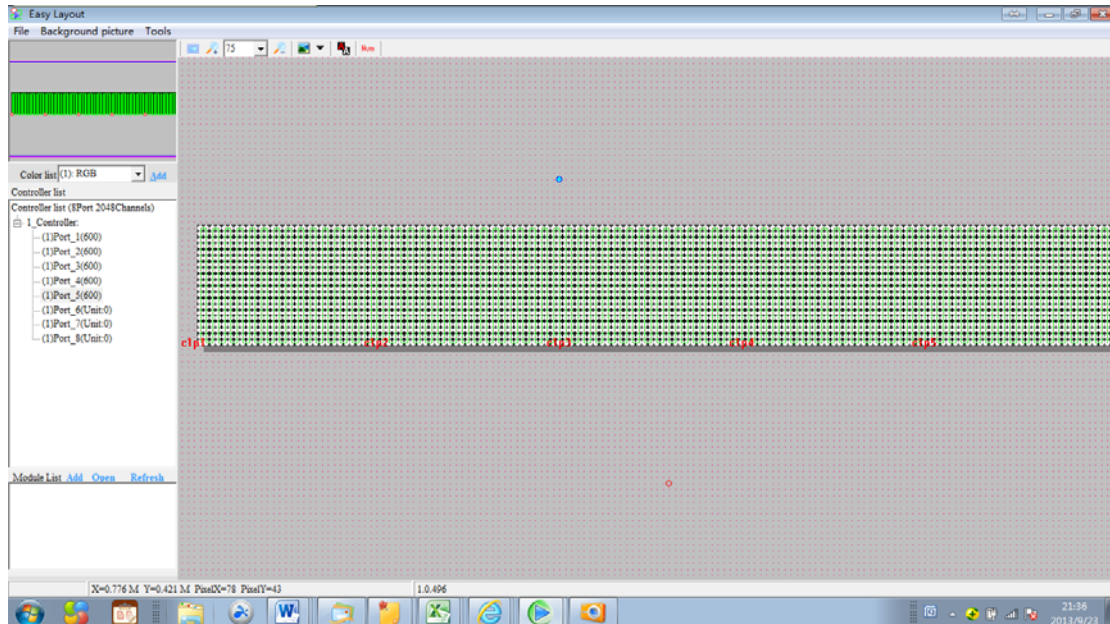
You will see the following window:



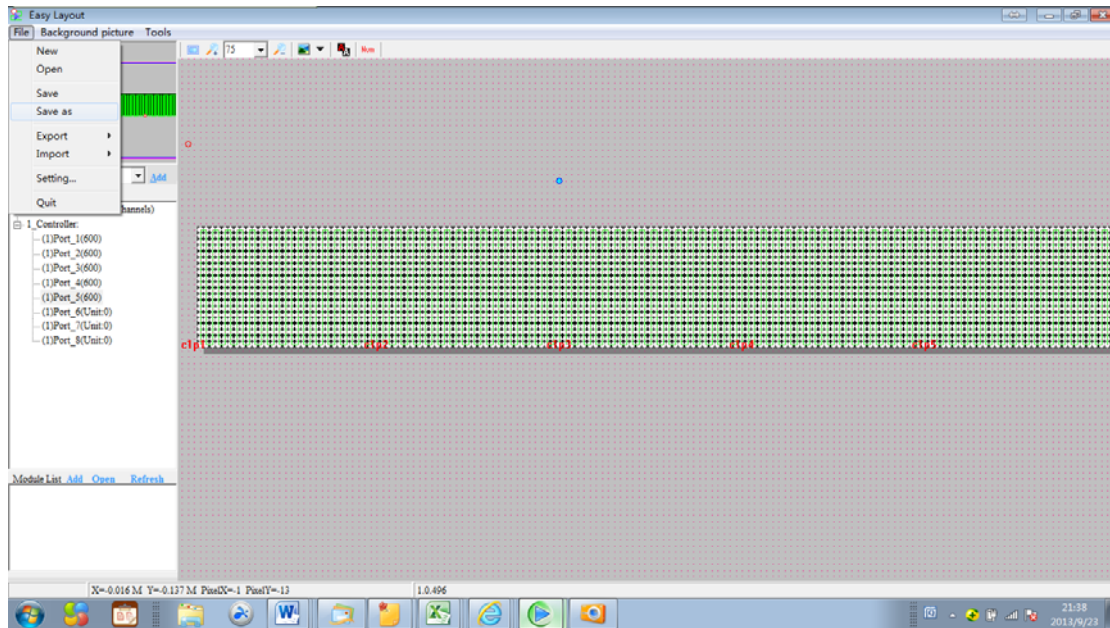




Follow the same steps to configure port 3, port 4 and port 5. Now you will see this window:




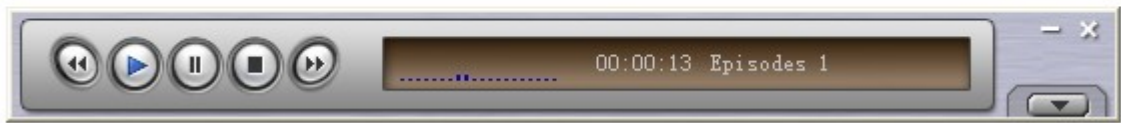
Save your setup




Now users can add image, video, flash and text to Easy Player.



Click  "Play", now DesignCurtain starts to work. Users can also see a small window displaying the same effects on desktop.



At the right side Easy Player window, users can minimize the software to system tray, or close the PC software or

	Minimize software to system tray. Close Easy Player software. Open, semi-enclosed object editor.
---	--